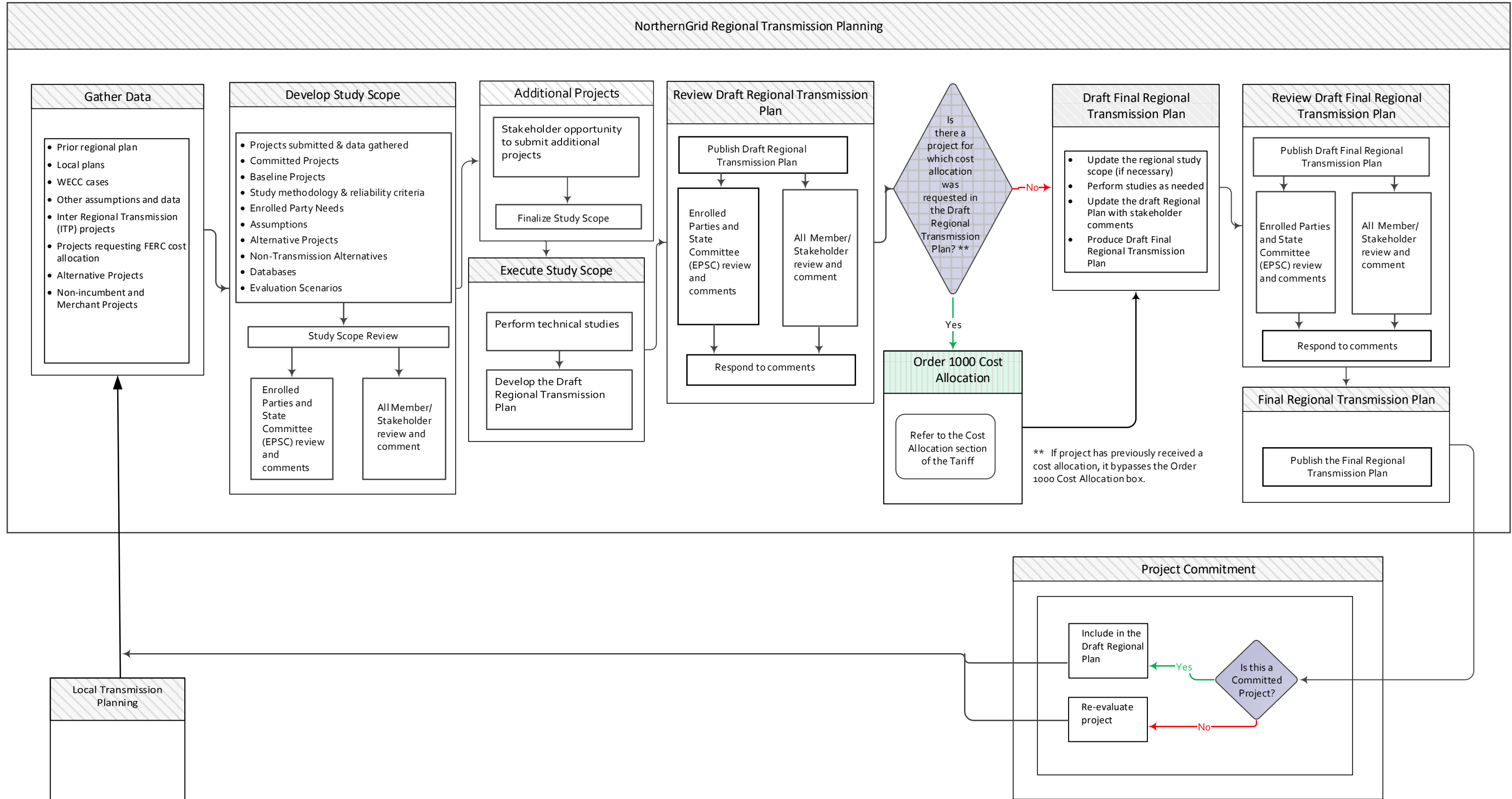
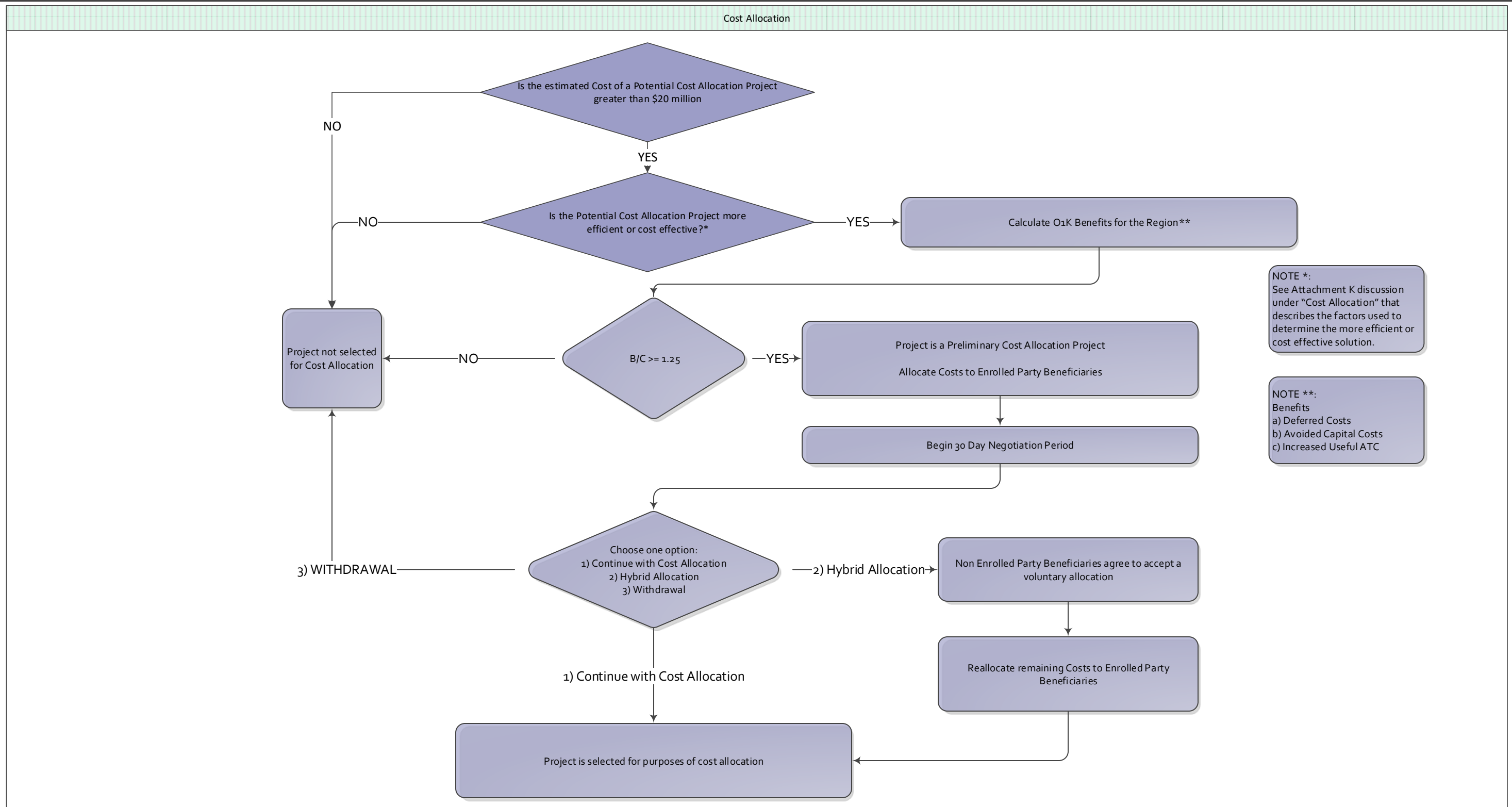


NorthernGrid Planning Process (Illustrative)*



Cost Allocation



NOTE *:
See Attachment K discussion under "Cost Allocation" that describes the factors used to determine the more efficient or cost effective solution.

NOTE **: Benefits
a) Deferred Costs
b) Avoided Capital Costs
c) Increased Useful ATC

Refer to page 1/2

Update Study Scope and Final Draft Regional Plan

Refer to page 1/2